

12 TON MOBILE TRUCK CRANE · JAW JIEFANG ·



FAW
SPECIFICATION

CODE

JN1JQQCD12G

Cooperation

Win-Win

Innovation

Development

More models

JNJQQCD12C

Product details



Cab

Multi-function steering wheel, original PTO, air conditioning + electric doors and windows + central locking, electric heated rearview mirrors.
Air brake, cruise control, complete interiors.



Lifting Boom

Customizable 8m x 5 sections, 8m x 6 sections. Single hook single winch, double hook double winch.



Operator Room

High safety, wide field of vision, easy to operate, ergonomically designed control system in crane cab. Strong environmental adaptability and additional equipment are optional.



Outrigger

Standard rear outriggers, thickened and double-section outriggers.

JQCM

12 TON FAW JIEFANG CHASSIS

HYDRAULIC TELESCOPIC STRAIGHT BOOM

Optional Boom: 8m-40m, 5 sections
8m-48m, 6 sections

OPERATION CONTROL ROOM

REAR TELESCOPIC OUTRIGGER

JACK OUTRIGGER JOYSTICK

UNILATERAL 1.1M X 2SECTION OUTRIGGER

12TON

FRONT

LEFT

RIGHT

BACK



TECHNICAL DATA

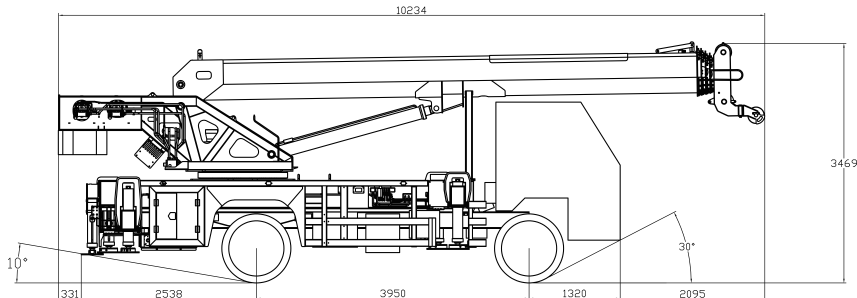
GENERAL DIMENSIONS

12 Ton FAW Jiefang Hydraulic Mobile Truck Crane

Full car size	10500*2360*3340mm
Wheelbase	4200mm
Large frame size	400mm*200mm

MAIN PARAMETERS

Engine model	Weichai
Engine power	118kw(160horsepower)
Gearbox model	Fast 8-speed transmission
Tires	900-R20
Braking system	Air brake (ABS)



TECHNICAL PARAMETERS

Rated lifting weight	14000kg
Maximum lifting height	36m
Main lifting mechanism	12 ton winch
Sub-lifting mechanism	12 ton winch
Lifting operation mode	Push lever operation
Radius of rotation	2.65m
Slewing bearing	1.3m turntable
Rear displacement top	Standard
Oil and electric dual-use	15kw-6pole copper core motor
Protection device	Bidirectional hydraulic lock
Work lamp	Two

Boom

Boom structure type	8m*5sections/8m*6sections
Total length of boom	35m/40m
Boom flat lying distance	22m(1 ton)
Rod-out form	Synchronous scaling

Hydraulic system

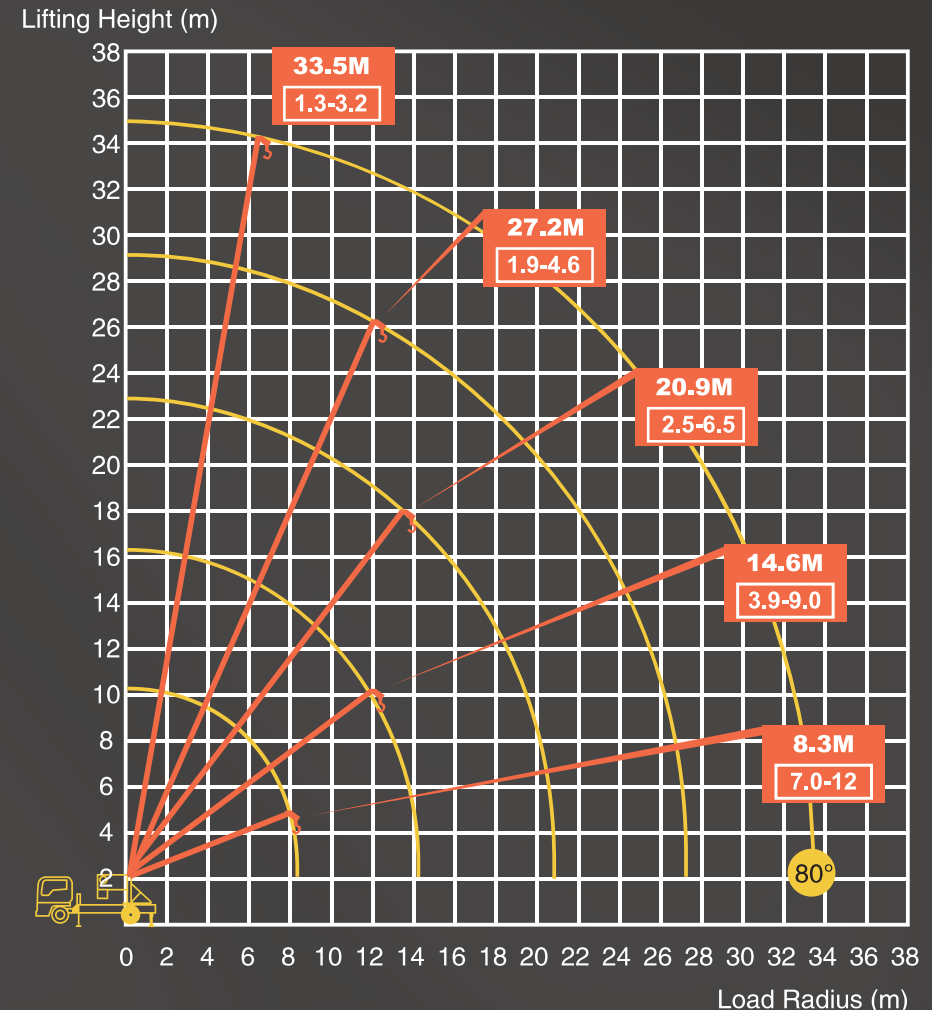
Hydraulic pump	Double pump
Steering mechanism	Hydraulic direction assist
Slewing mechanism	Secondary planetary steering

Outrigger

Outrigger	5 full hydraulic legs
Outrigger transverse span	6760mm
Outrigger longitudinal span	5200mm
Outrigger telescopic length	2.2m

RATED LIFTING CAPACITY & WORKING RANGE

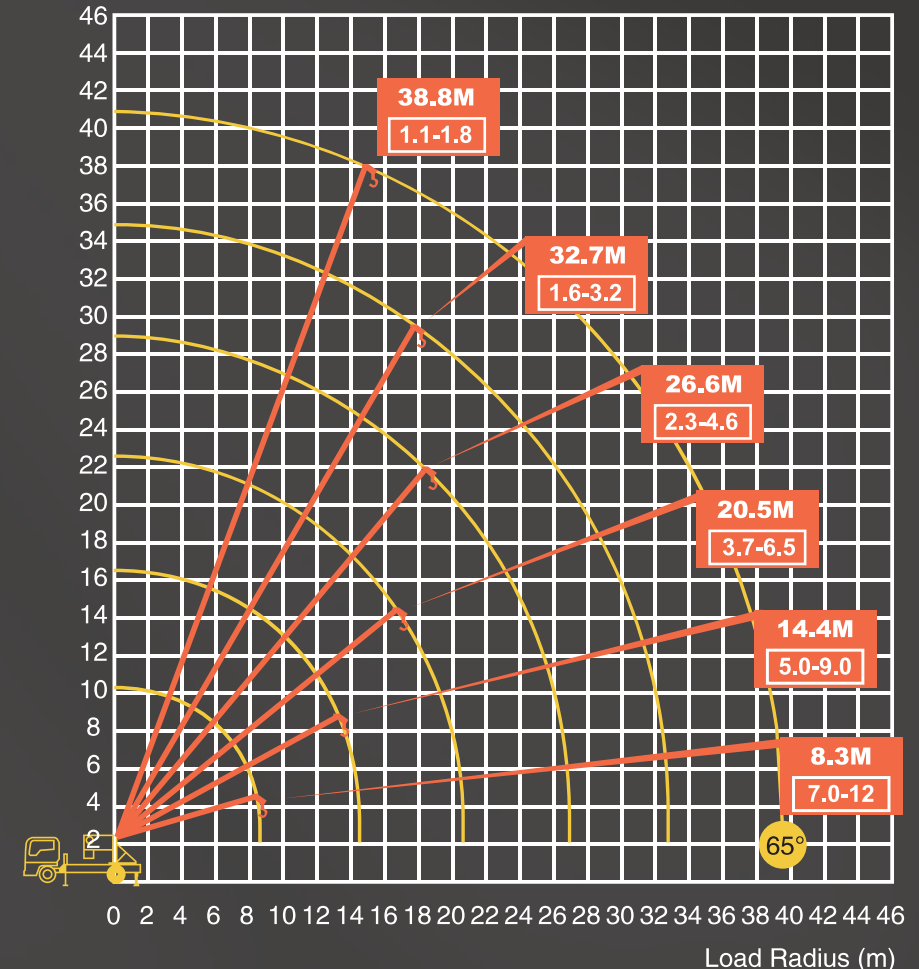
RATED LIFTING CAPACITY (Unit: ton) Working radius (m)	RATED LIFTING CAPACITY WEIGHT				
	8.3m 1 Boom	14.6m 2 Boom	20.9m 3 Boom	27.2m 4 Boom	33.5m 5 Boom
3.5	*12				
4.0	*10.5				
4.5	*9.3	*9.0			
5.0	*8.4	*8.1			
6.0	7.0	6.7	6.5		
7.0		5.7	5.5		
8.0		5.0	4.8	4.6	
9.0		4.4	4.2	4.0	
10.0		3.9	3.7	3.5	3.2
12.0			3.0	2.8	2.5
14.0			2.5	2.3	2.0
15.0				2.1	1.87
16.0				1.9	1.6
17.0					1.5
18.0					1.3
Factor	(*) is a factor of 6 ; the rest is a factor of 4.				
Notes:	1. The rated lifting capacity includes the weight of the hook (50kg) and the sling, and the outriggers must be supported on flat and solid ground. 2. The lifting capacity is determined by the actual load radius. 3. When the boom length is between any two boom lengths shown in the diagram, the longer one should be used for lifting. 4. When the boom length exceeds 6m, the outriggers must be fully extended. 5. This diagram does not include the deflection of the Boom and Fly jib.				



RATED LIFTING CAPACITY & WORKING RANGE

RATED LIFTING CAPACITY (Unit: ton) Working radius (m)	RATED LIFTING CAPACITY WEIGHT					
	8.3m 1 Boom	14.4m 2 Boom	20.5m 3 Boom	26.6m 4 Boom	32.7m 5 Boom	38.8m 6 Boom
3.5	*12					
4.0	*10.5					
4.5	*9.3	*9.0				
5.0	*8.4	*8.1				
6.0	7.0	6.7	6.5			
7.0		5.7	5.5			
8.0		5.0	4.8	4.6		
9.0			4.2	4.0		
10.0			3.7	3.5	3.2	
12.0				2.8	2.5	
14.0				2.3	2.0	1.8
15.0					1.87	1.67
16.0					1.6	1.4
17.0						1.3
18.0						1.1
Factor	(*) is a factor of 6 ; the rest is a factor of 4.					
Notes:	<ol style="list-style-type: none"> The rated lifting capacity includes the weight of the hook (50kg) and the sling, and the outriggers must be supported on flat and solid ground. The lifting capacity is determined by the actual load radius. When the boom length is between any two boom lengths shown in the diagram, the longer one should be used for lifting. When the boom length exceeds 6m, the outriggers must be fully extended. This diagram does not include the deflection of the Boom and Fly jib. 					

Lifting Height (m)





whatsapp

Jining Jiaqing Special Vehicle (Group) Co., Ltd.

Add: No. 631, Jiliang Road, Changgou Town, Rencheng district, Jining City, Shandong Province

Tell: +86 185 6172 8600

Web: www.jiningjiaqing.com

