

# 8 TON MOBILE TRUCK CRANE · FAW JIEFANG ·



FAW JIEFANG  
SPECIFICATION

CODE  
JNJQCD8B

**Cooperation**

**Win-Win**

**Innovation**

**Development**

**More models**

JNJQQCD8B

# Product details



Cab

Multi-function steering wheel, original PTO, air conditioning + electric doors and windows + central locking, electric heated rearview mirrors.  
Air brake, cruise control, complete interiors.



Lifting Boom

Customizable 6m x 6 sections. Single hook single winch, double hook double winch.



Operator Room

High safety, wide field of vision, easy to operate, ergonomically designed control system in crane cab. Strong environmental adaptability and additional equipment are optional.



Outrigger

Standard rear outriggers, thickened and double-section outriggers.



# JQCM

**8 TON FAW JIEFANG CHASSIS**

**HYDRAULIC TELESCOPIC STRAIGHT BOOM**

Optional Boom: 7m-35m, 5 sections  
6m-36m, 6 sections

**OPERATION CONTROL ROOM**

**REAR TELESCOPIC OUTRIGGER**

**UNILATERAL 0.75M X 2SECTION OUTRIGGER**

**JACK OUTRIGGER JOYSTICK**

# 8 TON

**FRONT**

**LEFT**

**RIGHT**

**BACK**



## TECHNICAL DATA

### GENERAL DIMENSIONS

#### \*8 Ton FAW Jiefang Hydraulic Mobile Truck Crane\*

Full car size	9050*2080*3060mm
Wheelbase	3300mm
Large frame size	300*150mm

### MAIN PARAMETERS

Engine model	Faw Xichai diesel
Engine power	95kw(130horsepower)
Gearbox model	Wanliyang high and low speed transmission
Tires	750-R16
Braking system	Air brake (ABS)

### TECHNICAL PARAMETERS

Rated lifting weight	8000kg
Maximum lifting height	30m
Main lifting mechanism	8 ton winch
Sub-lifting mechanism	7 ton winch
Lifting operation mode	Push lever operation
Radius of rotation	2.3m
Slewing bearing	1050mm turntable
Rear displacement top	Standard
Oil and electric dual-use	15kw-6pole copper core motor
Protection device	Bidirectional hydraulic lock
Work lamp	Two

### Boom

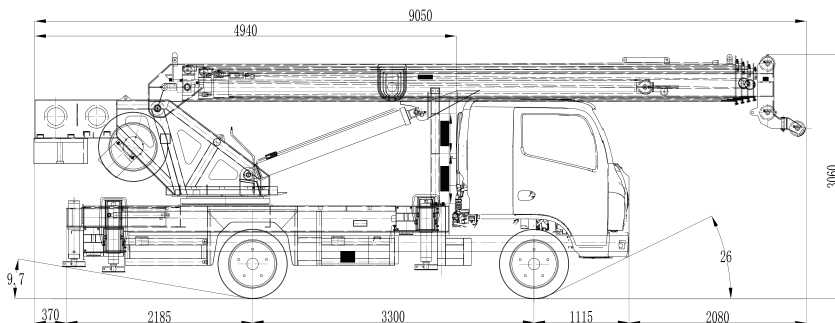
Boom structure type	7m*5sections/6m*6sections
Total length of boom	35m/36m
Boom flat lying distance	15m(1 ton)
Rod-out form	Synchronous scaling

### Hydraulic system

Hydraulic pump	Single/Double pump
Steering mechanism	Hydraulic direction assist
Slewing mechanism	Secondary planetary steering

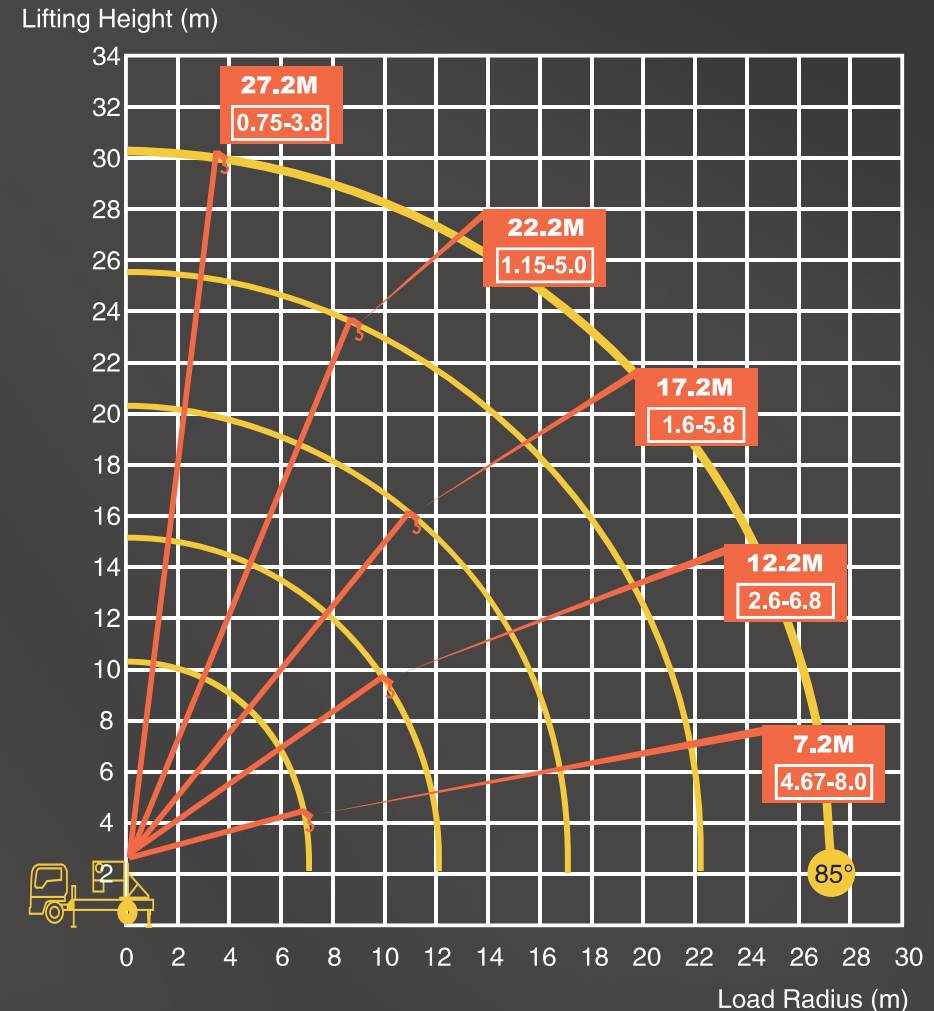
### Outrigger

Outrigger	5 full hydraulic legs
Outrigger transverse span	5080mm
Outrigger longitudinal span	4360mm
Outrigger telescopic length	1.5m



# RATED LIFTING CAPACITY & WORKING RANGE

RATED LIFTING CAPACITY (Unit: ton) Working radius (m)	RATED LIFTING CAPACITY WEIGHT				
	7.2m 1 Boom	12.2m 2 Boom	17.2m 3 Boom	22.2m 4 Boom	27.2m 5 Boom
3.5	*8.0				
4.0	*7.0	*6.8			
4.5	*6.2	*6.0	*5.8		
5.0	*5.6	*5.4	*5.2	*5.0	
6.0	*4.67	*4.47	*4.27	*4.0	3.8
7.0		3.8	3.6	3.4	3.2
8.0		3.3	3.1	2.9	2.7
9.0		2.9	2.7	2.5	2.3
10.0		2.6	2.4	2.2	2.0
12.0			1.9	1.7	1.5
14.0			1.6	1.4	1.2
15.0				1.27	1.07
16.0				1.15	0.95
17.0					0.85
18.0					0.75
Factor	(*) is a factor of 6 ; the rest is a factor of 4.				
Notes:	1. The rated lifting capacity includes the weight of the hook (50kg) and the sling, and the outriggers must be supported on flat and solid ground. 2. The lifting capacity is determined by the actual load radius. 3. When the boom length is between any two boom lengths shown in the diagram, the longer one should be used for lifting. 4. When the boom length exceeds 6m, the outriggers must be fully extended. 5. This diagram does not include the deflection of the Boom and Fly jib.				







whatsapp

Jining Jiaqing Special Vehicle (Group) Co., Ltd.

Add: No. 631, Jiliang Road, Changgou Town, Rencheng district, Jining City, Shandong Province

Tell: +86 185 6172 8600

Web: [www.jiningjiaqing.com](http://www.jiningjiaqing.com)

