

16 TON TRUCK MOUNTED CRANE · SHACMAN ·



SHACMAN
SPECIFICATION

CODE

JNJQSCD16A

Cooperation

Win-Win

Innovation

Development

More models

MOBILE TRUCK CRANE // HOMEMADE TRUCK CRANE // TRUCK MOUNTED CRANE // MULTIFUNCTION WORK VEHICLE // AERIAL WORK VEHICLE

JNJQSCD8A

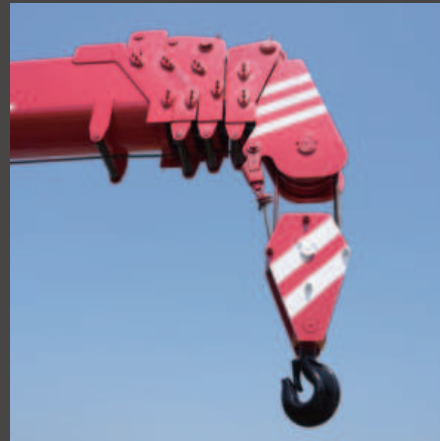
Product details



Cab

Multi-function steering wheel, original PTO, air conditioning + electric doors and windows + central locking, electric heated rearview mirrors.

Air brake, cruise control, complete interiors.



Lifting Boom

By wireless over-hoisting prevention device, it can prevent damage and breakdown of wire and real



Operation Station

Optimally & ergonomically designed top seat console guarantees all day comfort to operator



Outrigger

180° slewing type of main jack outriggers help protect against damage during the drive.

JQCM

16 TON SHACMAN CHASSIS

OPERATION CONTROL STATION

360° ROTARY CRANE

HYDRAULIC TELESCOPIC STRAIGHT BOOM

UNILATERAL 2M X 1SECTION OUTRIGGER

TRUCK BED

THICKENED WEAR-RESISTANT TIRES



16TON



3.2TON

6.3TON

8TON

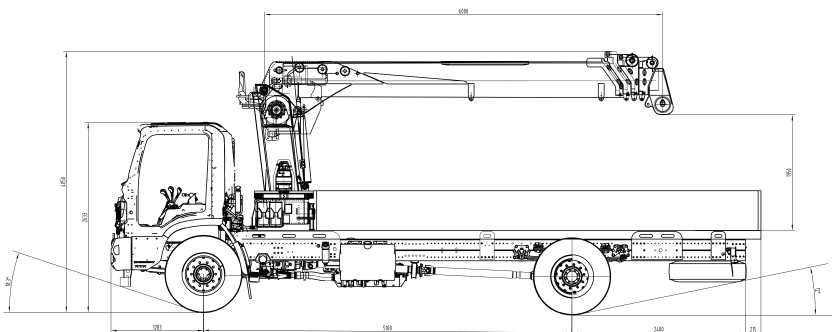
12TON



TECHNICAL DATA

MAIN PARAMETERS

16 Ton SHACMAN Hydraulic Truck Mounted Crane	
Overall dimensions	12000*2550*3980mm
Wheelbase	3500+4575mm
Max. weight (full load)	31000kg
Truck mounted crane weight	22150kg
Rated truck loading capacity	8720kg
Machine width span	2.5m*5.8m



CHASSIS

Chassis model	SHACMAN
Gearbox model	Fast 9-speed transmission
Engine Brand	Weichai
Engine power	350hp/257kw
Max. speed	90km/h
Cooling system	Air conditioner
Tyre	1200R20-18PR
Chassis frame thickness	300mm (3-layers)

LIFTING & SLEWING SYSTEM

Max. lifting weight	16000kg
Max. lifting height	22.8m
Slewing angle	360°
Max. elevation angle	0-80°
Boom	5.5m x 5 sections (U-shape, 5.8m-19.8m)
Max. lifting torque	40000kg*m
Boom extension method	2nd boom independent operation
Hydraulic outrigger	Automatic (2-section)

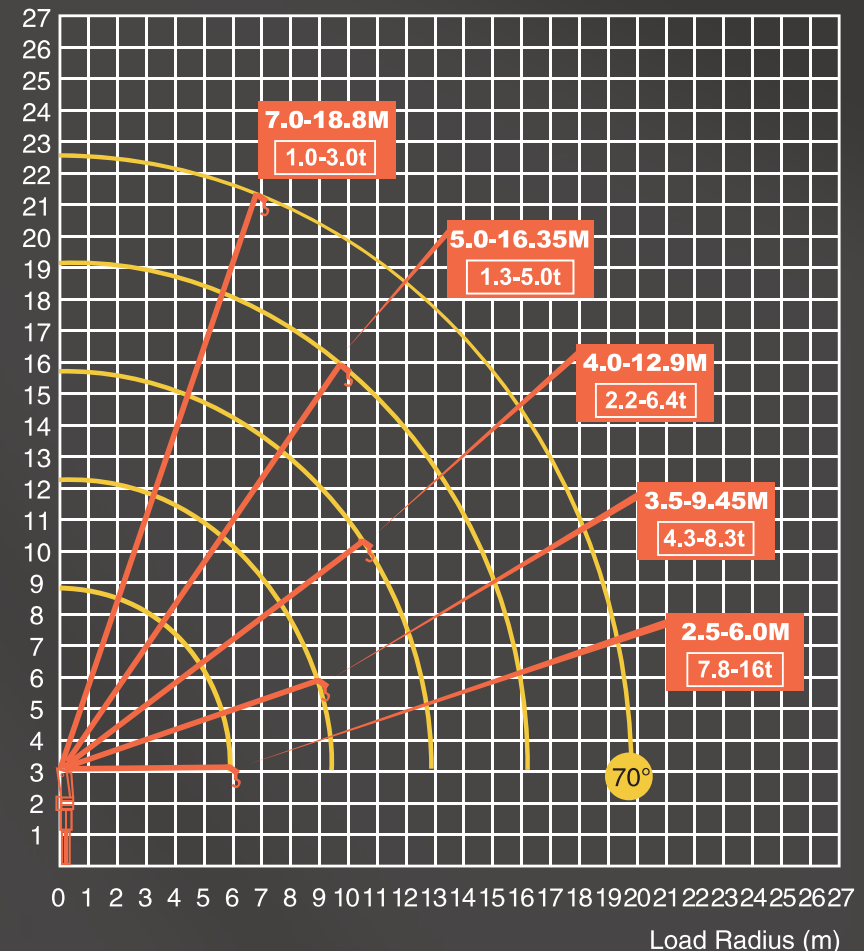
RATED LIFTING CAPACITY & WORKING RANGE

RATED LIFTING CAPACITY (Unit: ton) Working radius (m)	RATED LIFTING CAPACITY WEIGHT				
	6.0m 1 Boom	9.45m 2 Boom	12.9m 3 Boom	16.35m 4 Boom	19.8m 5 Boom
2.5	*16				
3.0	*13				
3.5	*10	8.3			
4.0	*9.0	8.0	6.4		
4.5	7.8 (6.0)	7.4	6.0		
5.0		6.6	5.2	5.0	
6.0		6.2	4.4	4.0	
7.0		5.0	3.5	3.2	3.0
9.0		4.3 (9.45)	3.0	3.0	2.6
11.0			2.8	2.8	2.2
13.0			2.2 (12.9)	2.0	2.8
14.0				1.7	1.5
16.0				1.3 (16.35)	1.3
18.0					1.1
19.8					1.0 (18.8)
Factor	(*) is a factor of 6 ; the rest is a factor of 4.				

Notes:

- The rated lifting capacity includes the weight of the hook (110kg) and the sling, and the outriggers must be supported on flat and solid ground.
- The lifting capacity is determined by the actual load radius.
- When the boom length is between any two boom lengths shown in the diagram, the longer one should be used for lifting.
- When the boom length exceeds 6m, the outriggers must be fully extended.
- This diagram does not include the deflection of the Boom and Fly jib.

Lifting Height (m)





whatsapp

Jining Jiaqing Special Vehicle (Group) Co., Ltd.

Add: No. 631, Jiliang Road, Changgou Town, Rengcheng district, Jining City, Shandong Province

Tell: +86 185 6172 8600

Web: www.jiningjiaqing.com

