

8 TON TRUCK MOUNTED CRANE · DONGFENG ·



DONGFENG
SPECIFICATION

CODE
JNJQSCD8A

Cooperation

Win-Win

Innovation

Development

More models

JNJQSCD8A

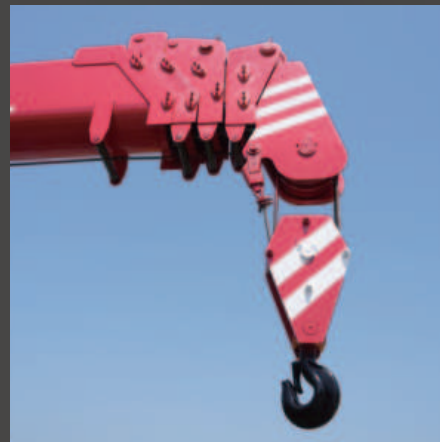
Product details



Cab

Multi-function steering wheel, original PTO, air conditioning + electric doors and windows + central locking, electric heated rearview mirrors.

Air brake, cruise control, complete interiors.



Lifting Boom

By wireless over-hoisting prevention device, it can prevent damage and breakdown of wire and real



Operation Station

Optimally & ergonomically designed top seat console guarantees all day comfort to operator



Outrigger

180° slewing type of main jack outriggers help protect against damage during the drive.

JQCM

8 TON DONGFENG CHASSIS

OPERATION CONTROL STATION

360° ROTARY CRANE

HYDRAULIC TELESCOPIC STRAIGHT BOOM

UNILATERAL 2M X 1SECTION OUTRIGGER

TRUCK BED

THICKENED WEAR-RESISTANT TIRES



8 TON



FRONT

LEFT

RIGHT

BACK



JQCM

TECHNICAL DATA

MAIN PARAMETERS

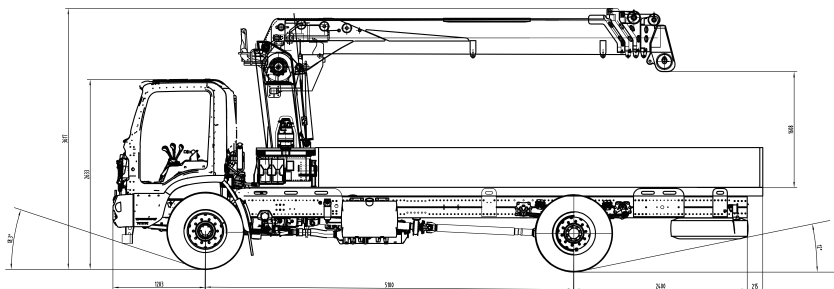
8 Ton Dongfeng Hydraulic Truck Mounted Crane	
Overall dimension	9000*2550*3850mm
Truck bed dimensions	6100*2450*550mm
Wheelbase	5100mm
Max. weight (full load)	18000kg
Truck mounted crane weight	12080kg
Rated truck loading capacity	5725kg

CHASSIS

Chassis model	Dongfeng Huashen DV3
Gearbox model	Fast 8-speed transmission
Engine Brand	Yuchai
Engine power	200hp/147kw
Steering	Power steering available
Axle load	6500/11500kg
Max. speed	88km/h
Cooling system	Air conditioner
Leaf spring	9/11+8
Approch/Departure angle	21°/17°
ABS	Yes
Fuel type	Diesel
Displacement	4156cc
Tyre	1000R20-18PR
Dual-pump confluence	Aluminum hydraulic oil tank

LIFTING & SLEWING SYSTEM

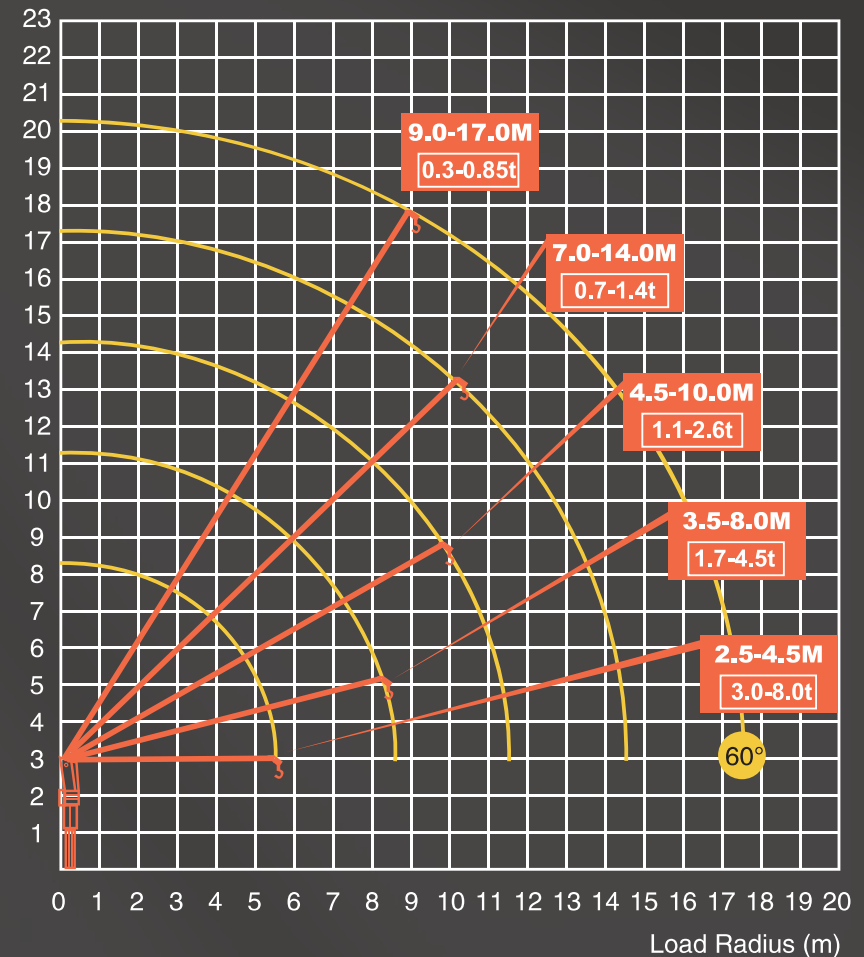
Max. lifting weight	8000kg
Max. lifting height	20m
Max. horizontal boom length	17.5m
Max. elevation angle	0-80°
Boom	5m x 5 sections
Boom rope	Out rope



RATED LIFTING CAPACITY & WORKING RANGE

RATED LIFTING CAPACITY (Unit: ton) Working radius (m)	RATED LIFTING CAPACITY WEIGHT				
	1 Boom	2 Boom	3 Boom	4 Boom	5 Boom
2.5	*8.0				
3.0	*7.0				
3.5	*5.0	4.5			
4.0	4.0	3.6			
4.5	3.0	2.8	2.6		
5.0		2.2	2.0		
6.0		2.0	1.8		
7.0		1.85	1.6	1.4	
8.0		1.7	1.4	1.2	
9.0			1.2	1.0	0.85
10.0			1.1	0.9	0.6
12.0				0.8	0.5
14.0				0.7	0.42
16.0					0.35
17.0					0.3
Factor	(*) is a factor of 6 ; the rest is a factor of 4.				
Notes: <ol style="list-style-type: none"> 1. The rated lifting capacity includes the weight of the hook (110kg) and the sling, and the outriggers must be supported on flat and solid ground. 2. The lifting capacity is determined by the actual load radius. 3. When the boom length is between any two boom lengths shown in the diagram, the longer one should be used for lifting. 4. When the boom length exceeds 6m, the outriggers must be fully extended. 5. This diagram does not include the deflection of the Boom and Fly jib. 					

Lifting Height (m)





whatsapp

Jining Jiaqing Special Vehicle (Group) Co., Ltd.

Add: No. 631, Jiliang Road, Changgou Town, Rencheng district, Jining City, Shandong Province

Tell: +86 185 6172 8600

Web: www.jiningjiaqing.com

