



# AERIAL WORK PLATFORM

【THE CHOICE OF A NEW GENERATION】



# CONTENTS

OTHER MODELS CAN BE CUSTOMIZED

## 01

### AERIAL WORK PLATFORM

· AWP - 30M	01
· AWP - 33.5M	04
· AWP - 45M	07
· AWP - 60M	10

## 02

### 3 IN 1 AWP TRUCK

· 3 in 1 - 20M / 4T	13
· 3 in 1 - 25M / 5T	16
· 3 in 1 - 30M / 8T	19

## 03

### INSULATED AWP TRUCK

· Insulated AWP	22
-----------------	----

# EMGK30MAX

## AERIAL WORK PLATFORM



- Lightweight design of the whole vehicle, welded with high-strength steel, beautiful appearance.
- The boom and leg are welded with high-strength steel, with beautiful appearance, large stress and high strength.



## AERIAL WORK PLATFORM

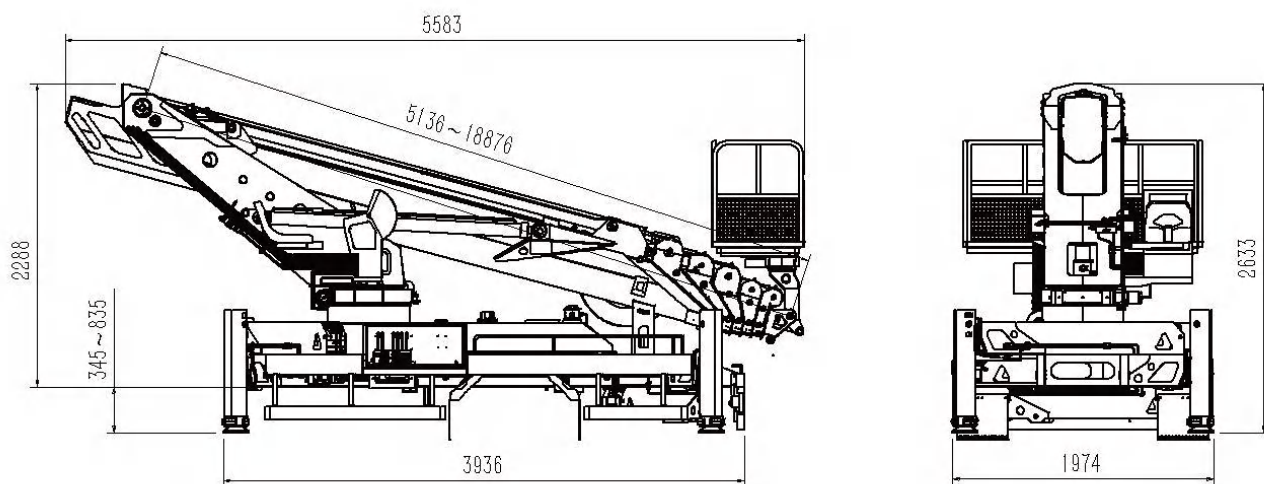


Basket static hydraulic automatic leveling, 360° rotation, overload automatic protection.

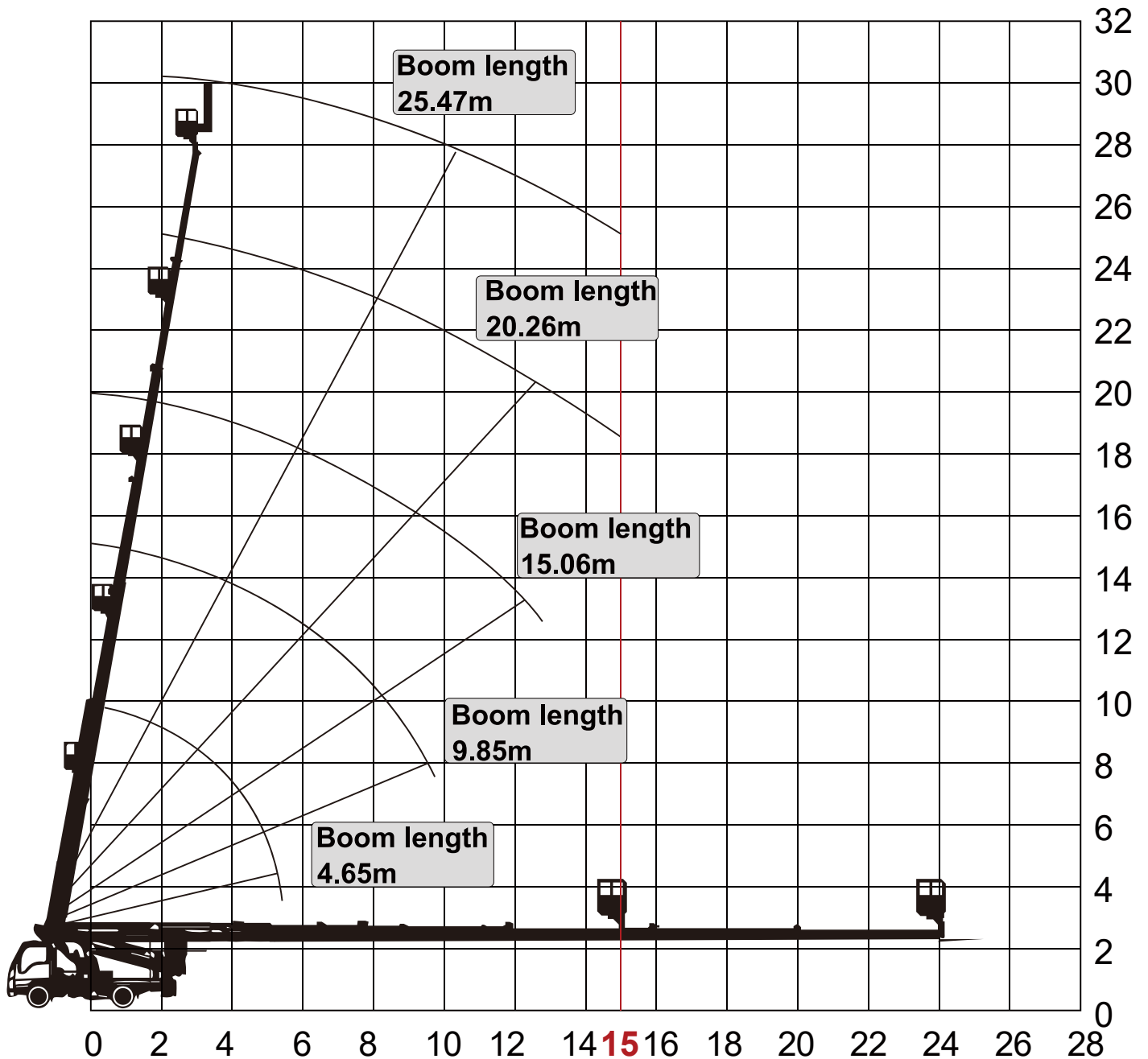


The outrigger is equipped with position detection switch and automatic induction alarm function.

Category	Description		Unit	Specification
Main performance specifications	Rated load of working platform		kg	200
	Maximum operating height		m	30
	Turntable rotation		°	360 continuous
	Maximum operating range		m	15
	Maximum platform height		m	28.3
	Outrigger span (Full extension)	Horizontal	mm	5630
		Vertical	mm	5380
	Platform size	Long	mm	1800
		Width	mm	620
		High	mm	800
	Maximum allowable lateral force		N	400
	Working platform rotation		°	360 continuous
	Maximum allowable wind speed		m/s	12.5



### EMGK30MAX (Boom length-Operating range) Operating Height Curve



**Max. horizontal operating**

**\*Operation prohibited beyond the max. horizontal operating point**

# EMGK35

## AERIAL WORK PLATFORM



- Lightweight design of the whole vehicle, welded with high-strength steel, beautiful appearance.
- The boom and leg are welded with high-strength steel, with beautiful appearance, large stress and high strength.



## AERIAL WORK PLATFORM

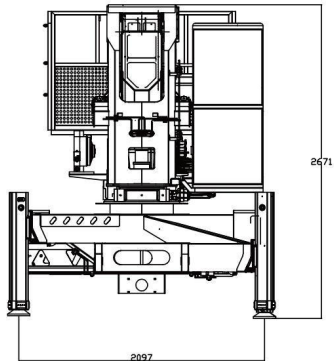
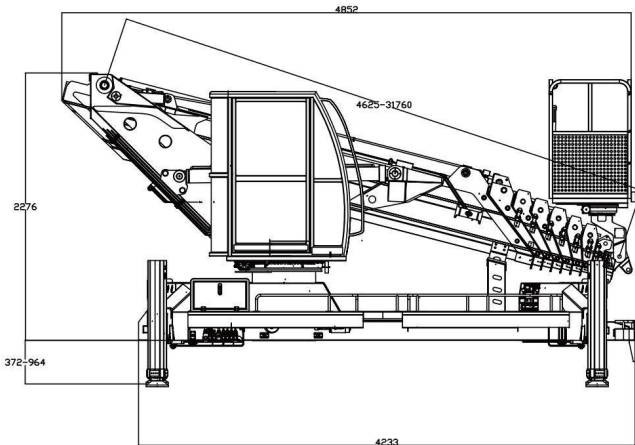


Basket static hydraulic automatic leveling, 360° rotation, overload automatic protection.

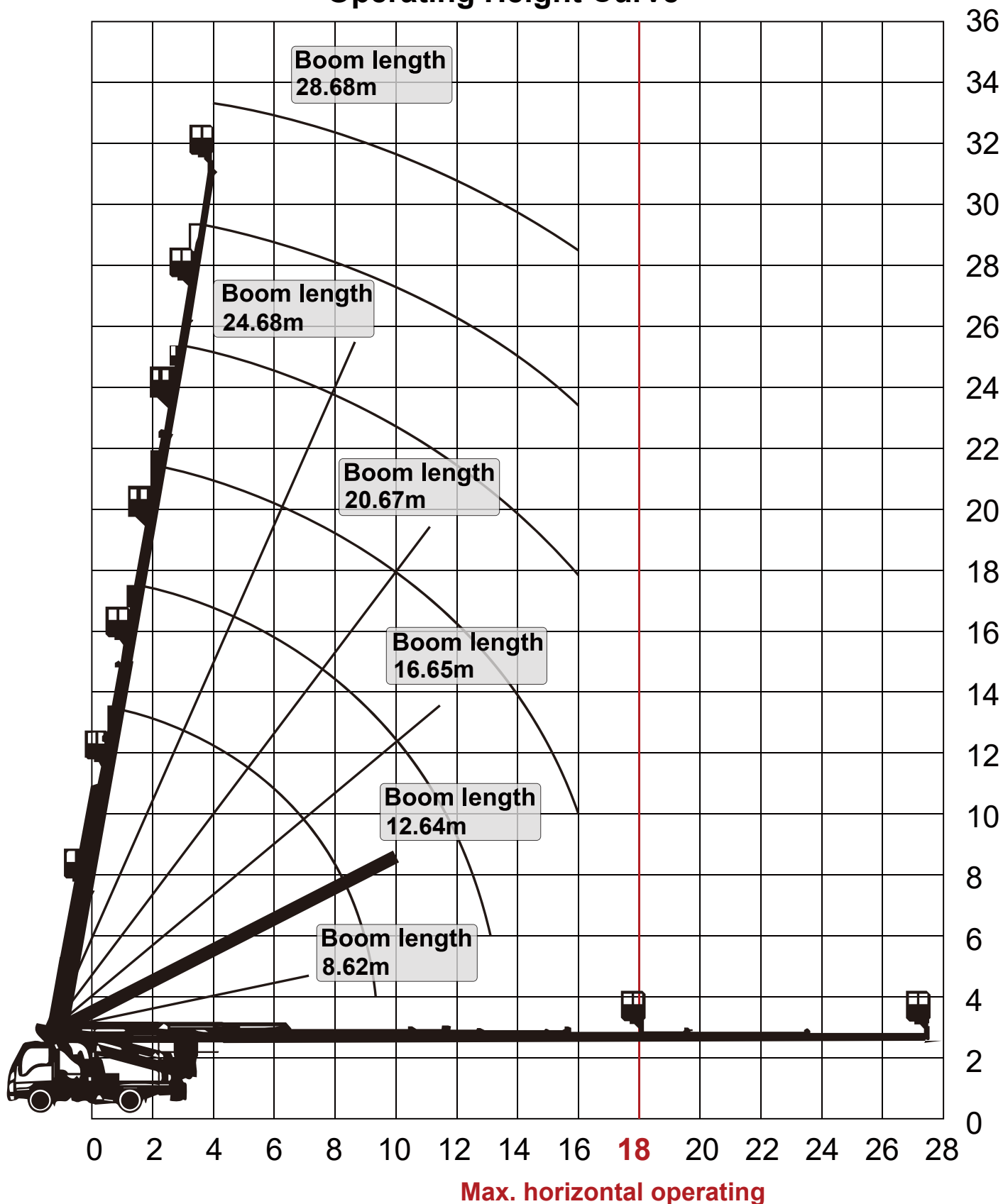


The outrigger is equipped with position detection switch and automatic induction alarm function.

Category	Description		Unit	Specification
Main performance specifications	Rated load of working platform		kg	200
	Maximum operating height		m	33.5
	Turntable rotation		°	360 continuous
	Maximum operating range		m	18
	Maximum platform height		m	31.6
	Outrigger span (Full extension)	Horizontal	mm	6400
		Vertical	mm	6000
	Platform size	Long	mm	1600
		Width	mm	700
		High	mm	1100
	Maximum allowable lateral force		N	400
	Working platform rotation		°	360 continuous
	Maximum allowable wind speed		m/s	12.5



**EMGK35 (Boom length-Operating range)  
Operating Height Curve**



**\*Operation prohibited beyond the max. horizontal operating point**

# EMGK45

## AERIAL WORK PLATFORM



- Lightweight design of the whole vehicle, welded with high-strength steel, beautiful appearance.
- The boom and leg are welded with high-strength steel, with beautiful appearance, large stress and high strength.



## AERIAL WORK PLATFORM

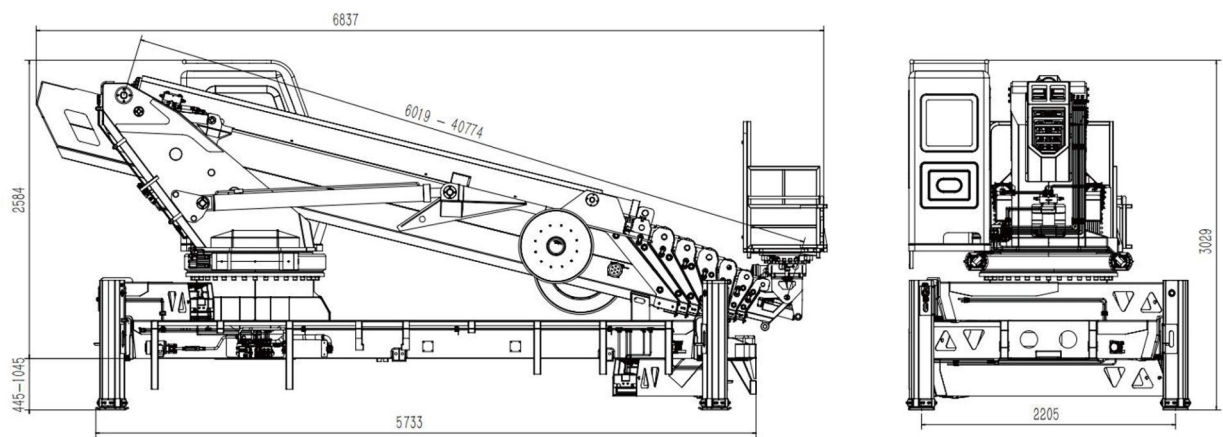


Basket static hydraulic automatic leveling, 360° rotation, overload automatic protection.

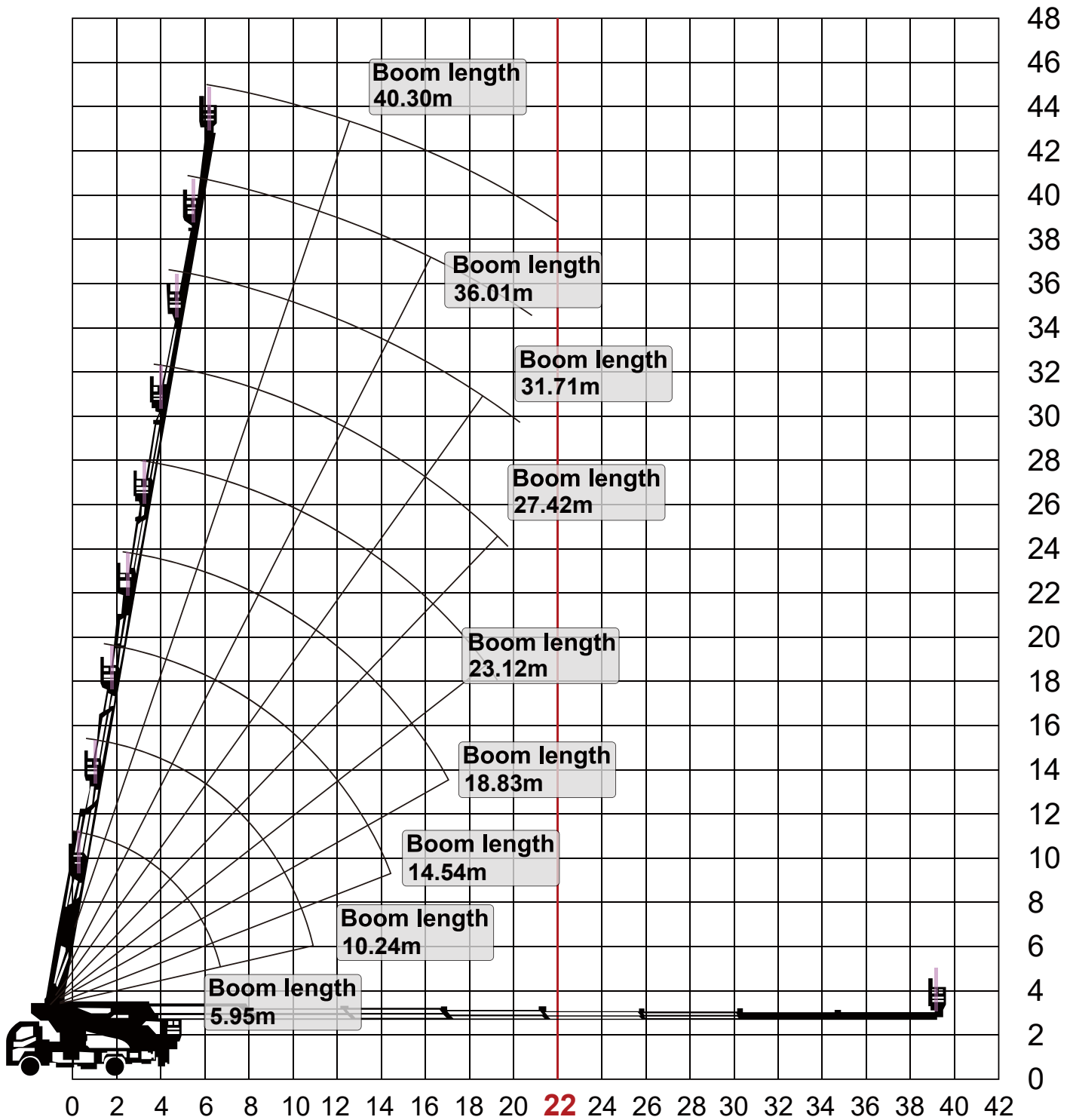


The outrigger is equipped with position detection switch and automatic induction alarm function.

Category	Description		Unit	Specification
Main performance specifications	Rated load of working platform		kg	300
	Maximum operating height		m	45
	Turntable rotation		°	360 continuous
	Maximum operating range		m	22
	Maximum platform height		m	43.3
	Outrigger span (Full extension)	Horizontal	mm	7700
		Vertical	mm	7300
	Platform size	Long	mm	3200
		Width	mm	700
		High	mm	1100
	Maximum allowable lateral force		N	400
	Working platform rotation		°	360 continuous
	Maximum allowable wind speed		m/s	12.5



### EMGK45 (Boom length-Operating range) Operating Height Curve



**Max. horizontal operating**

**\*Operation prohibited beyond the max. horizontal operating point**

# EMGK60

## AERIAL WORK PLATFORM



- Lightweight design of the whole vehicle, welded with high-strength steel, beautiful appearance.
- The boom and leg are welded with high-strength steel, with beautiful appearance, large stress and high strength.



## AERIAL WORK PLATFORM

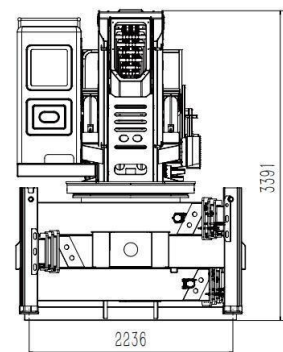
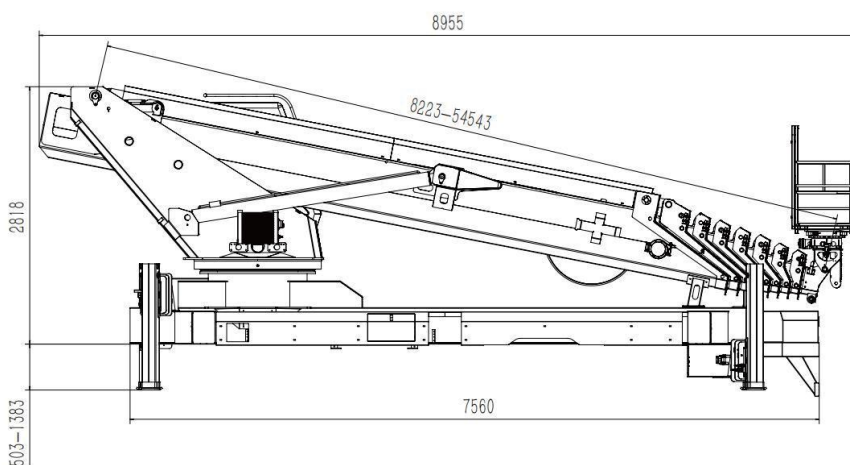


Basket static hydraulic automatic leveling, 360° rotation, overload automatic protection.

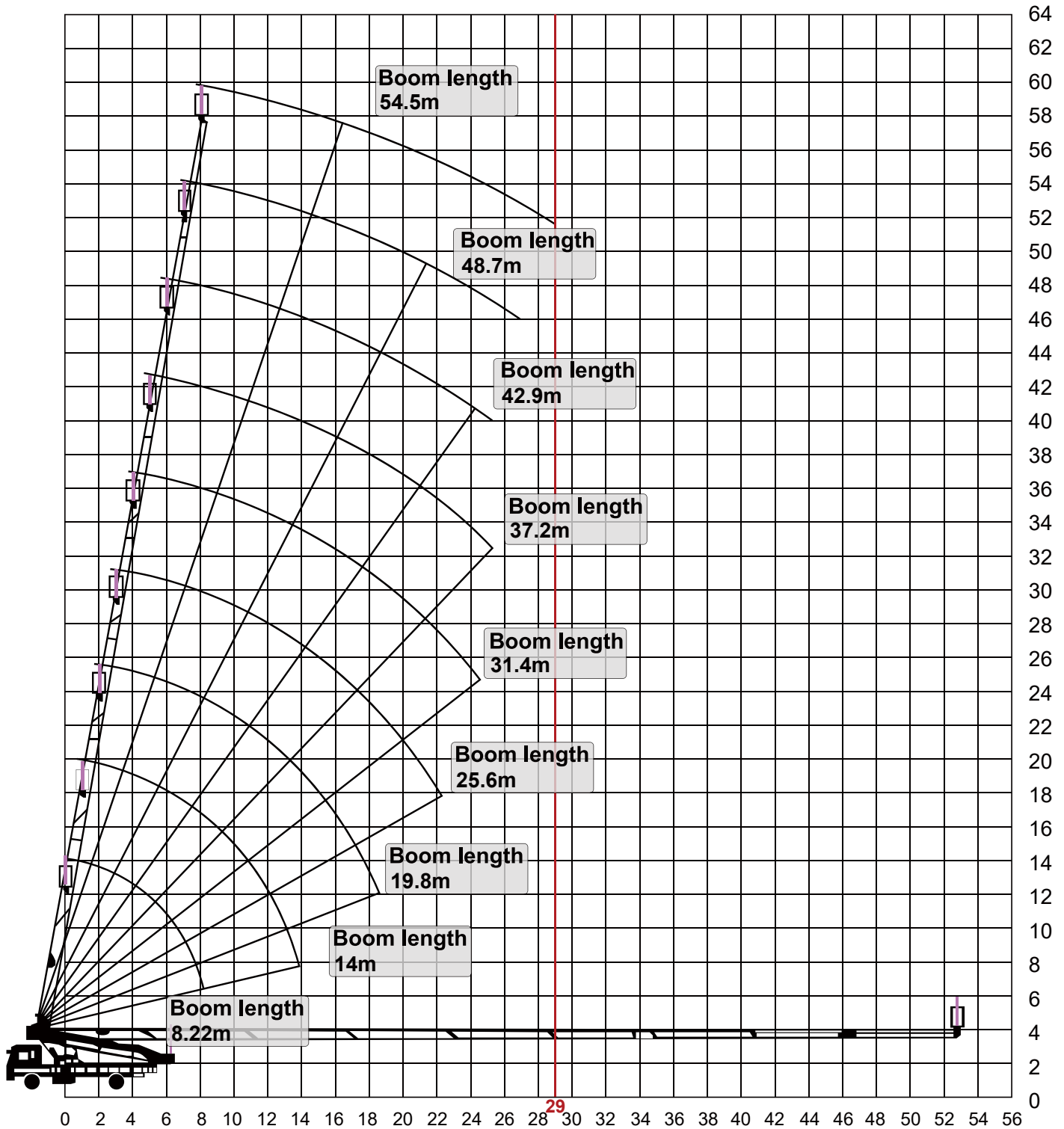


The outrigger is equipped with position detection switch and automatic induction alarm function.

Category	Description		Unit	Specification
Main performance specifications	Rated load of working platform		kg	300
	Maximum operating height		m	60
	Turntable rotation		°	360 continuous
	Maximum operating range		m	29
	Maximum platform height		m	58.3
	Outrigger span (Full extension)	Horizontal	mm	8700
		Vertical	mm	8600
	Platform size	Long	mm	3200
		Width	mm	700
		High	mm	1100
	Maximum allowable lateral force		N	400
	Working platform rotation		°	360 continuous
	Maximum allowable wind speed		m/s	12.5



### EMGK60 (Boom length-Operating range) Operating Height Curve



**Max. horizontal operating**

**\*Operation prohibited beyond the max. horizontal operating point**

# EMFV20

## 3 IN 1 AWP TRUCK



- Three-in-one design: Combines aerial work, crane, and truck functions.
- High efficiency: Maximizes productivity while reducing multi machinery costs and investment.



## 3 IN 1 AWP TRUCK



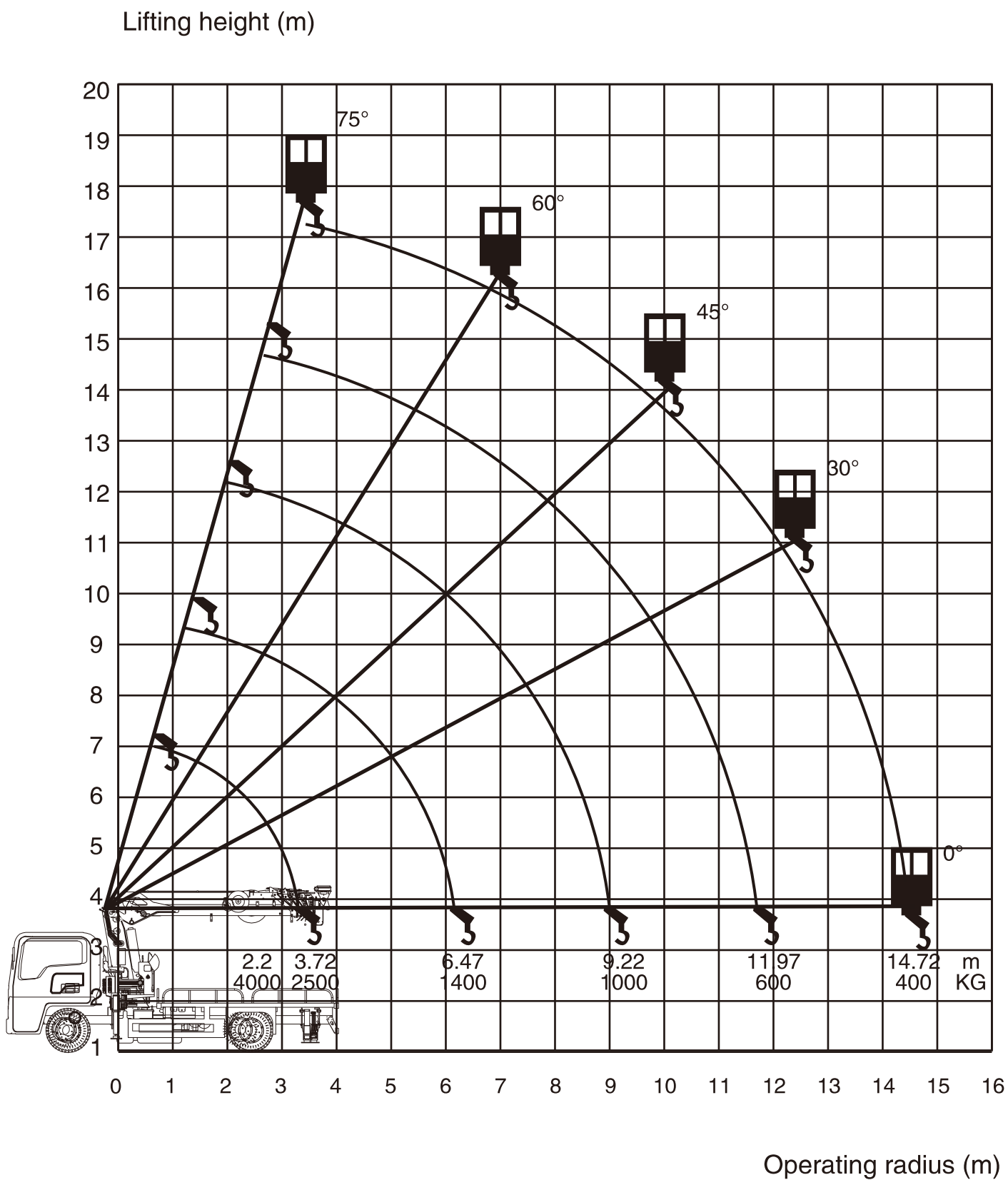
Upper-lower interlock, limit protection, emergency power source, dual hydraulic balance valves.



H-type outriggers, 4 individually adjustable telescopic legs, full-surround design outriggers for extra stability

Aerial Working Platform	
Item	Specification
Max. Working Height	19 m
Max. Working Radius	14 m
Platform Rated Load	200 kg
Slewing Angle	360°
Platform Size	1500 x 700 x 1100 mm
Platform Slewing Range	+/-180°
Boom	6-section boom, 5 sections extend synchronously, wire rope extension with backup rope ensures safe descent even if the main rope breaks
Control System	Branded electrical control system with wireless remote control
Hydraulic System	Electro-hydraulic proportional valve, stepless speed control, with emergency power source
Hydraulic Outriggers	H-type outriggers, 4 individually adjustable telescopic legs, full-surround design outriggers for extra stability
Safety Devices	Upper-lower interlock, limit protection, emergency power source, dual hydraulic balance valves
Truck Crane	
Item	Specification
Max. Lifting Capacity	4000 kg
Main Winch	4 tons
Boom Structure	6-section boom
Max. Lifting Height	17 m
Slewing	360° free rotation
Power Pump	Single pump system
Truck	
Item	Specification
Truck Box Size	3500 x 2200 mm
Operation Mode	Mid-mounted control

### EMFV20 Load Chart



# EMFV25

## 3 IN 1 AWP TRUCK



- Three-in-one design: Combines aerial work, crane, and truck functions.
- High efficiency: Maximizes productivity while reducing multi machinery costs and investment.



## 3 IN 1 AWP TRUCK



Upper-lower interlock, limit protection, emergency power source, dual hydraulic balance valves.

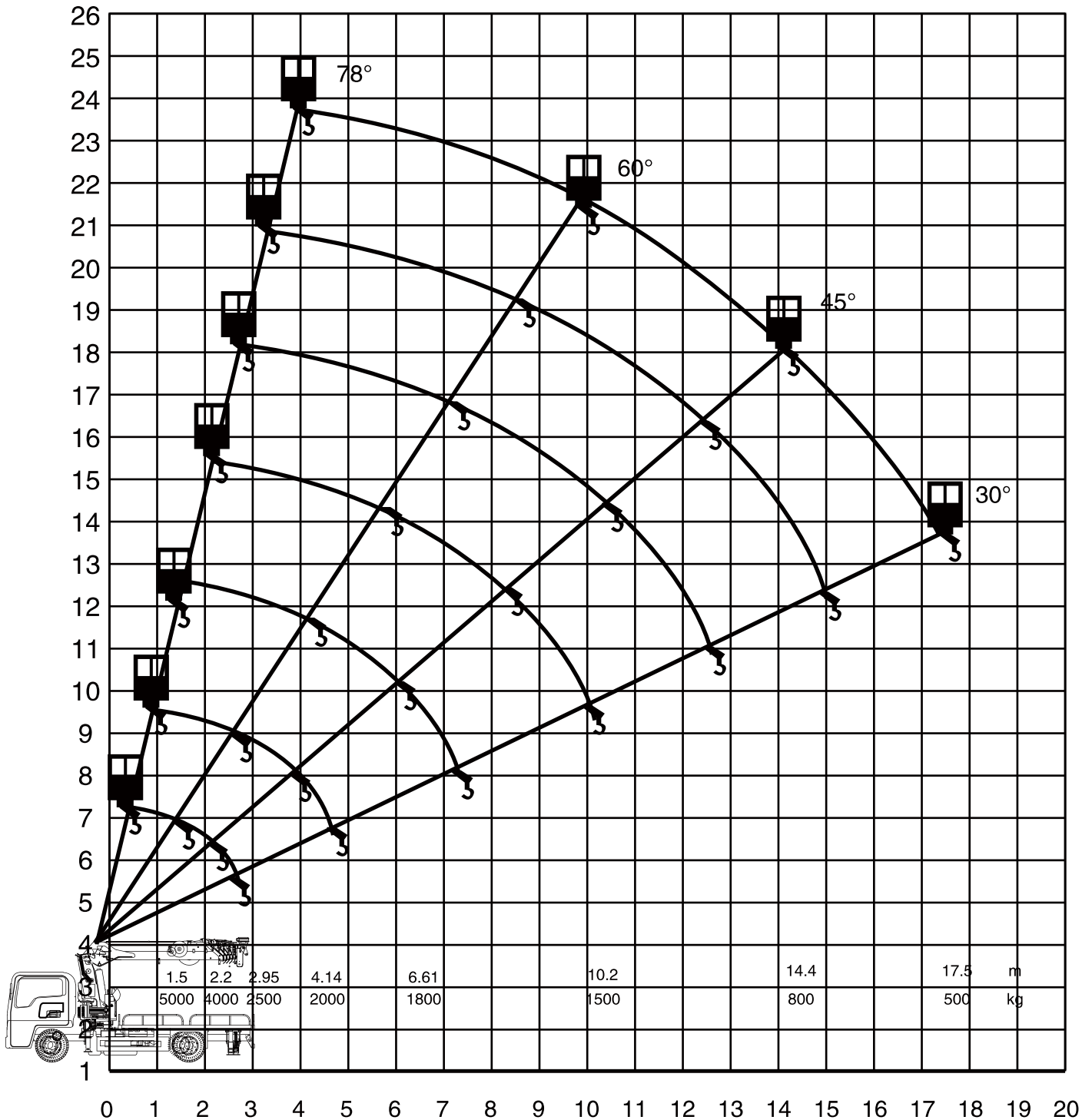


H-type outriggers, 4 individually adjustable telescopic legs, full-surround design outriggers for extra stability

Aerial Working Platform	
Item	Specification
Max. Operating Height	25 m
Max. Working Range	22 m
Boom Rotation Angle	360°
Basket Platform Size	1600 × 700 × 1100 mm
Main Boom	7-section arm, 6 sections extend synchronously, wire rope extension with backup rope ensures safe descent even if the main rope breaks
Operating System	Well-known domestic electronic control system, equipped with wireless remote control
Hydraulic System	Electro-hydraulic proportional valve, infinitely variable speed, with emergency power source
Hydraulic Outriggers	H-type outriggers, 4 individually adjustable telescopic legs; fully surrounded design for extra stability
Safety Devices	Interlock between upper and lower control, limit protection, emergency power source, dual-direction hydraulic balance valves
Truck Crane	
Item	Specification
Max. Lifting Capacity	5 tons
Main Winch	6.3 tons
Boom	7-section boom
Slewing Structure	360° rotation
Power Pump	Imported hydraulic pump, powerful
Cooling Function	Fully automatic hydraulic oil radiator
Truck	
Item	Specification
Flatbed Size	4500 × 2200 mm
Operation Mode	Mid-mounted control and wireless remote control operation

### EMFV25 Load Chart

Lifting Height (m)



Operating Radius (m)

# EMFV30

## 3 IN 1 AWP TRUCK



- Three-in-one design: Combines aerial work, crane, and truck functions.
- High efficiency: Maximizes productivity while reducing multi machinery costs and investment.



## 3 IN 1 AWP TRUCK



Upper-lower interlock, limit protection, emergency power source, dual hydraulic balance valves.



H-type outriggers, 4 individually adjustable telescopic legs, full-surround design outriggers for extra stability

Aerial Working Platform	
Item	Specification
Maximum Working Height	30 m
Maximum Outreach	20 m
Platform Rated Load	200 kg
Boom Rotation Angle	360°
Platform Size	1500mm x 700mm x1100 mm
Platform Rotation Range	180°
Boom Structure	7-section boom
Boom Telescoping	2nd and 3rd Sections seperately extension; 4th to 7th Sections synchronized telescoping
Control System	Domestic famous brand electric control system, equipped with wireless remote; multi-position operation
Hydraulic System	Electro-hydraulic proportional valve, stepless speed control
Hydraulic Outriggers	H-type, 4 telescopic outriggers, independently adjustable, fully enclosed for enhanced stability
Safety Devices	Upper/lower interlock, limit protection, dual hydraulic balance valves
Truck Crane	
Item	Specification
Maximum Lifting Capacity	8,000 kg
Main Winch	8 T
Boom	7-section hydraulic boom
Maximum Working Height	25.4 m
Slewing Structure	360° continuous rotation
Power Pump	High-grade high-pressure pump
Truck	
Item	Specification
Truck Bed Size	6500mm x 2500mm
Operation Mode	Upper control + Remote control

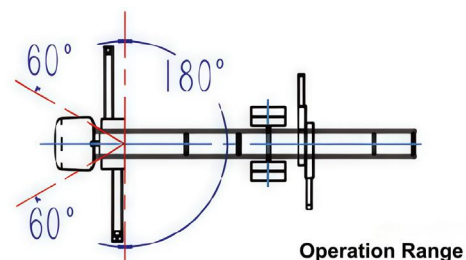
### EMFV30 Crane Load Chart

Unit: kg

Working Radius (m)	Boom Length (m)				
	5.6m	10.2m	14.8m	19.4m	23.9m
2.5	8000	6000			
3.0	6600	5000			
3.5	6800	4800			
4.0	5100	4500	4200		
4.5	4600	3800	3500		
5.0	4100	3300	3000		
5.5	3700	3000	2800	2800	
6.0		2700	2500	2600	
6.5		2500	2300	2400	2300
7.0		2300	2100	2100	2000
7.5		2200	1900	1850	1800
8.0		2100	1800	1700	1600
8.5		2000	1700	1600	1500
9.0			1600	1500	1450
9.5			1500	1420	1350
10.0			1400	1350	1250
11.0			1300	1200	1000
12.0			1200	1100	900
13.0				1000	850
14.0				900	800
15.0				800	750
16.0					700
17.0					650
18.0					600
19.0					550
20.0					450
21.0					400
Recommended Reeving	n=6	n=4	n=4	n=4	n=4
Maximum Hoisting Height (m)	7.6	12.1	16.5	21	25.3

#### Notes:

1. The heights in this table do not include boom deflection.
2. Determine the load capacity based on the actual working radius when operating with outriggers fully extended, to the rear and side.
3. When the boom length is between the values shown in the table, use the load capacity value for the longer boom length.
3. Rated load capacity includes the weight of the load and rigging.
4. Outriggers must be supported by solid ground.



# ENMAX INSULATED AWP TRUCK



## Straight Boom Insulated AWP Truck

- Three-section telescopic boom: High-speed movement and efficient operation.
- Small jib boom: Rotates  $\pm 125^\circ$  for increased operational flexibility
- Work platform rotation:  $\pm 90^\circ$  horizontal rotation and vertical lifting capability; equipped with hydraulic power interface.
- Optional small jib crane: Maximum lifting capacity 350 kg
- Work platform material: Polyethylene, with voltage resistance up to 50 kV for 5 minutes
- Remote engine control: For both the work platform and turntable.
- Outrigger support monitoring: Limits work platform movement toward dangerous directions if a soft-leg condition is detected.

## Hybrid Boom Insulated AWP Truck

- The upper structure adopts a hybrid boom design; the work platform can rotate  $360^\circ$ , with a platform lifting distance of 540 mm.
- Side-mounted work platform with platform lifting function.
- Articulated boom structure, providing excellent ability to overcome obstacles.
- Boom and outriggers are interlocked, providing a larger span and enhanced overall stability.
- Platform, turntable engine ignition; Hydraulic power interface on platform operations.
- The vehicle uses imported proportional hydraulic valves on the upper structure, offering fine motion control and simultaneous multi-function operation, greatly improving operational comfort.



## SAFETY FEATURES

The product comes with the following safety features to guarantee safe operation for both the r

Name	Brief Description
Interlock Between Outriggers and Boom	Upper and lower system operations are manually selected through the control valve lever.
Electric Emergency Pump	When the chassis engine or the main hydraulic pump fails, press the emergency pump button and operate the corresponding function to safely bring the operator back to the ground and retract the entire vehicle.
Emergency Stop Device	Used for emergency engine shutdown and power cut-off.
Engine Start/Stop	Controlled by the computer control box and remote controller to start or stop the engine.
High-Definition Display Screen	The smart display allows real-time monitoring of equipment status, helping personnel quickly diagnose and handle faults, and keep track of vehicle conditions.
Compound Operation	Any operation can be freely combined, allowing simultaneous extension/retraction, luffing and hoisting, turntable rotation, and bucket rotation.
Remote Control (Wireless)	Remote control range up to 100m; both platform and ground operations are unobstructed and communication is reliable.
Platform Load Detection	Through multiple safety device data, the computer calculates and limits the working range and gives reminders and limitations. (These three configurations are standard for 45m(EMGK45) and 60m(EMGK60) models, and optional for 30m(EMGK30MAX) and 35m(EMGK35) models at additional cost.)
Wind Speed Intelligent Limiting	
Outrigger Length and Angle Intelligent Limiting	

### Warning:

Do not rely solely on the above safety devices to prevent accidents. Operators must strictly follow the operation manual and comply with national and regional laws and regulations.

Overloading and violations are strictly prohibited.

Due to continuous product improvement and upgrading, the actual product may differ from the described contents without prior notice.



**Shandong Enmax Machinery Co.,Ltd.**

**Telephone: +86 193 5357 0738**

**E-mail: [sales@enmaxgroup.com](mailto:sales@enmaxgroup.com)**

**Website: [www.enmaxgroup.com](http://www.enmaxgroup.com)**

**Factory: Economic Development Zone, Jining, Shandong 272000, China**